

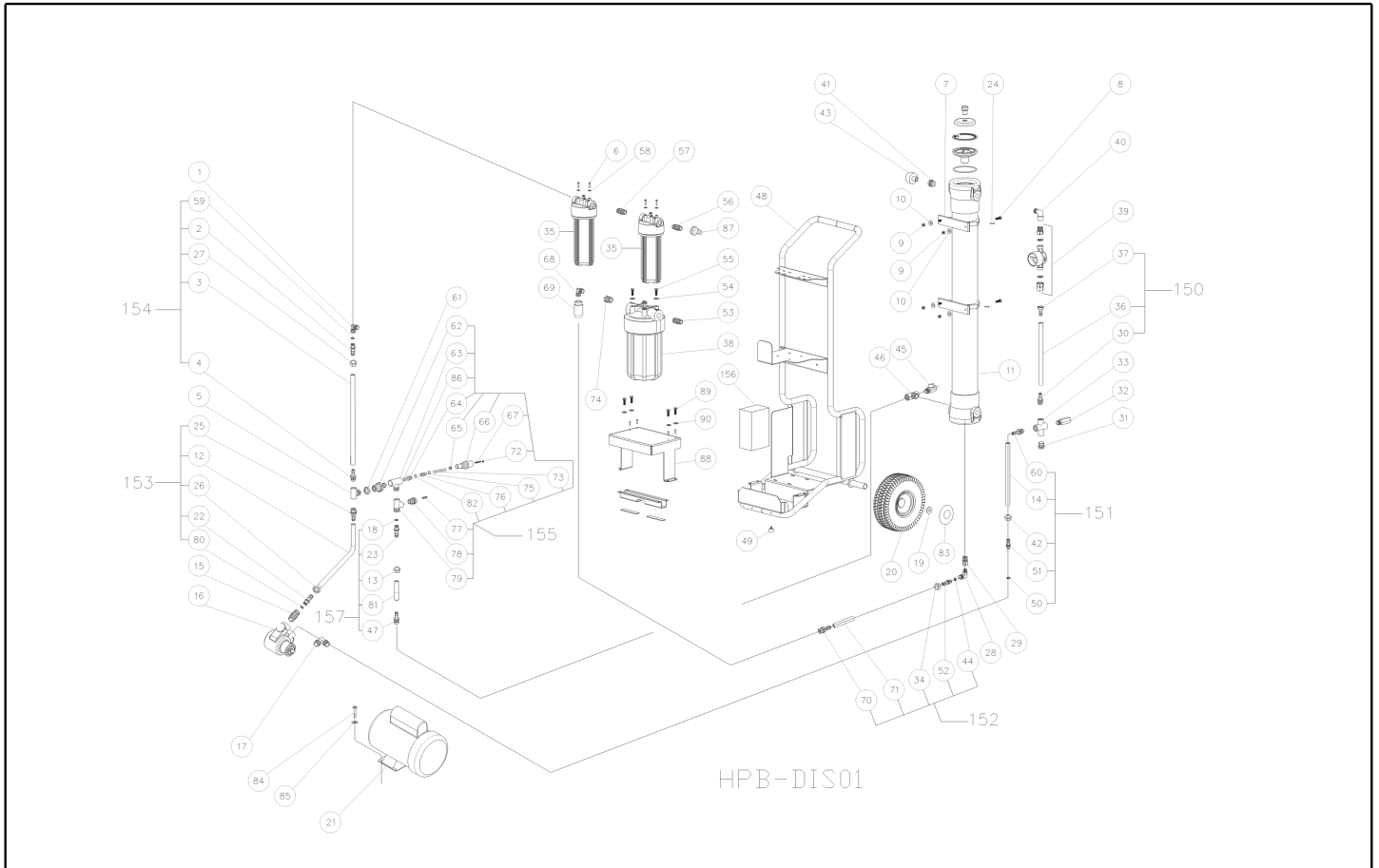


IPC

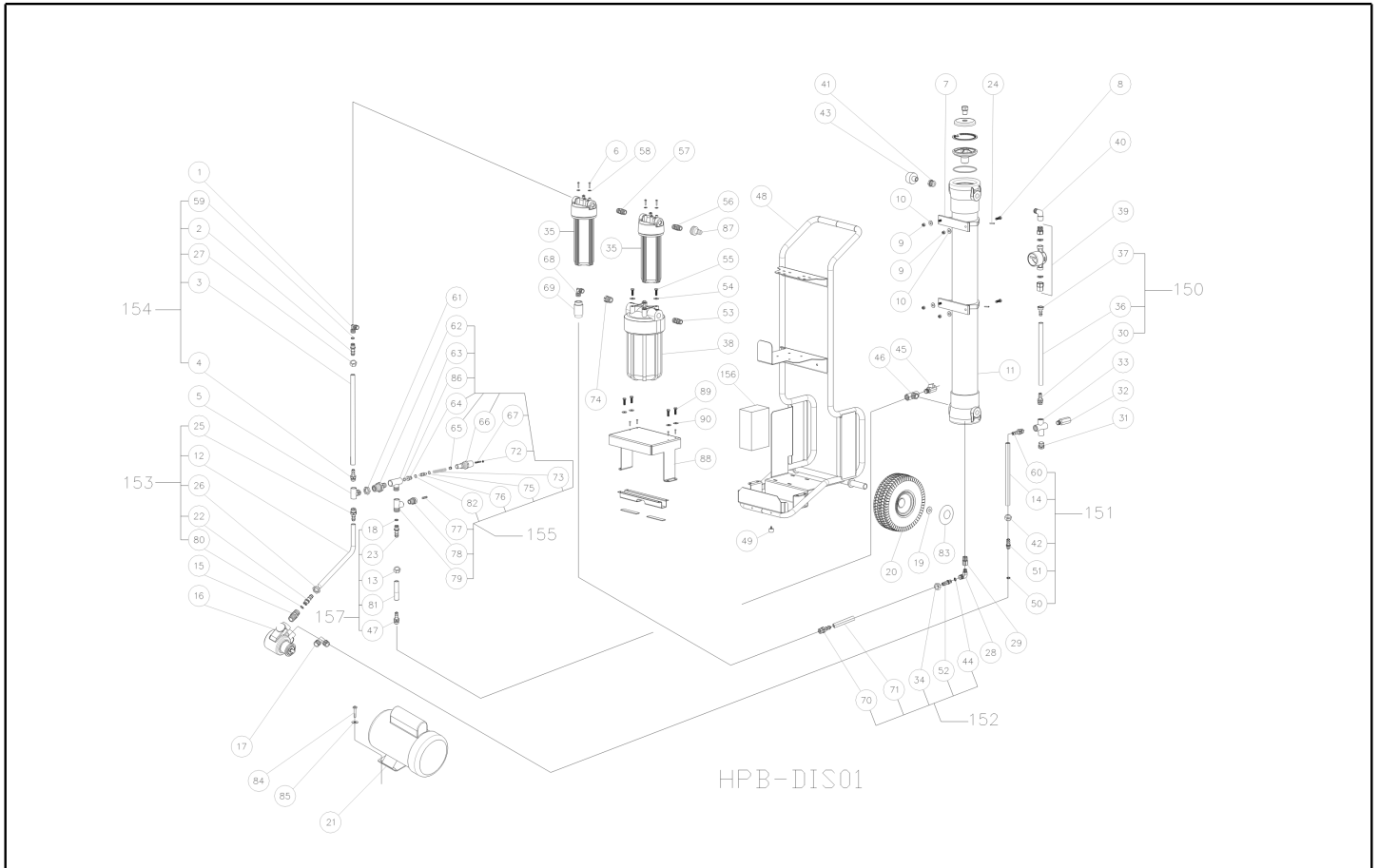
Spare parts list

Ref: APTA40016

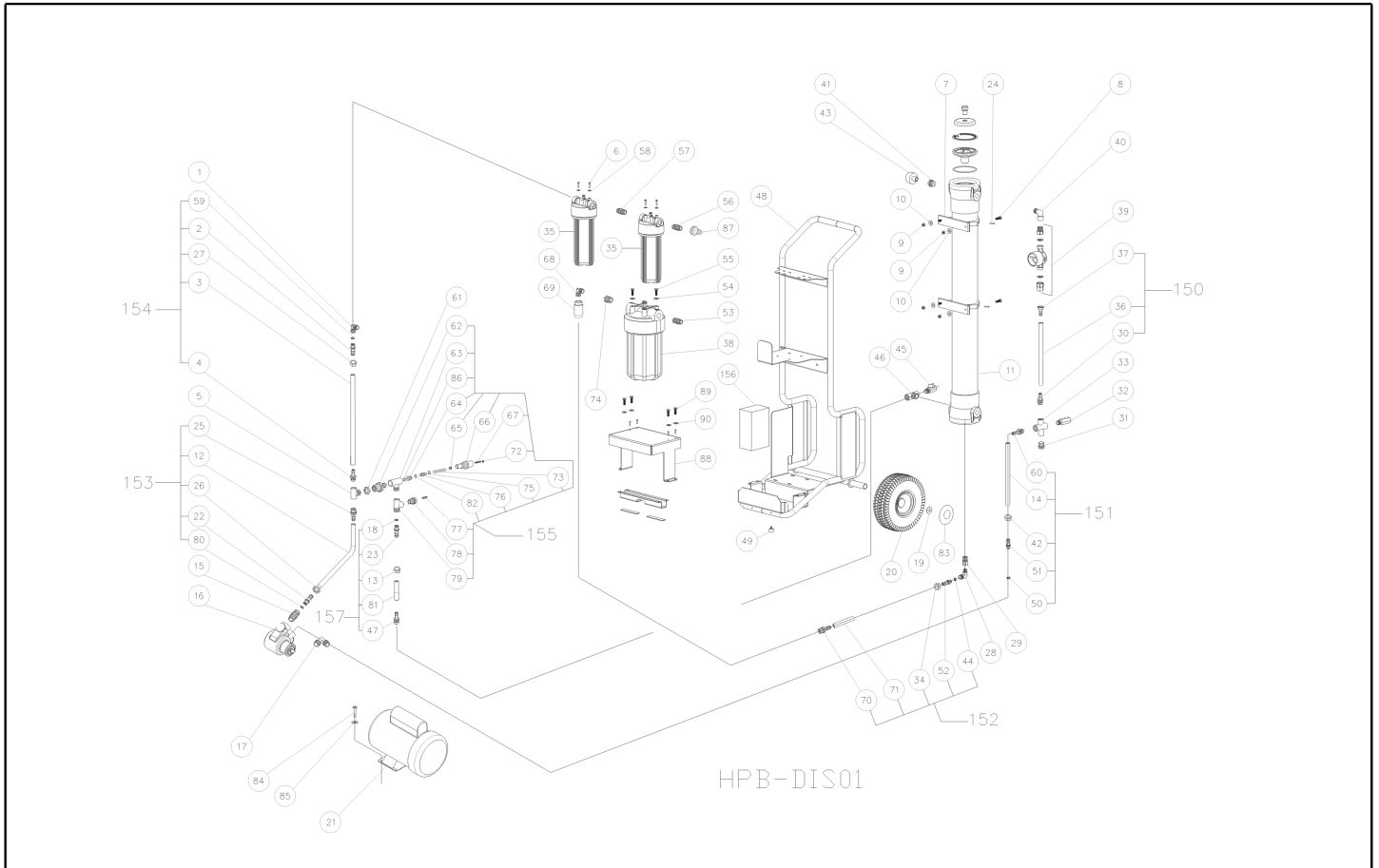
Model: WATER SOFTNER HIGHPURE HPB -BATT. IPC



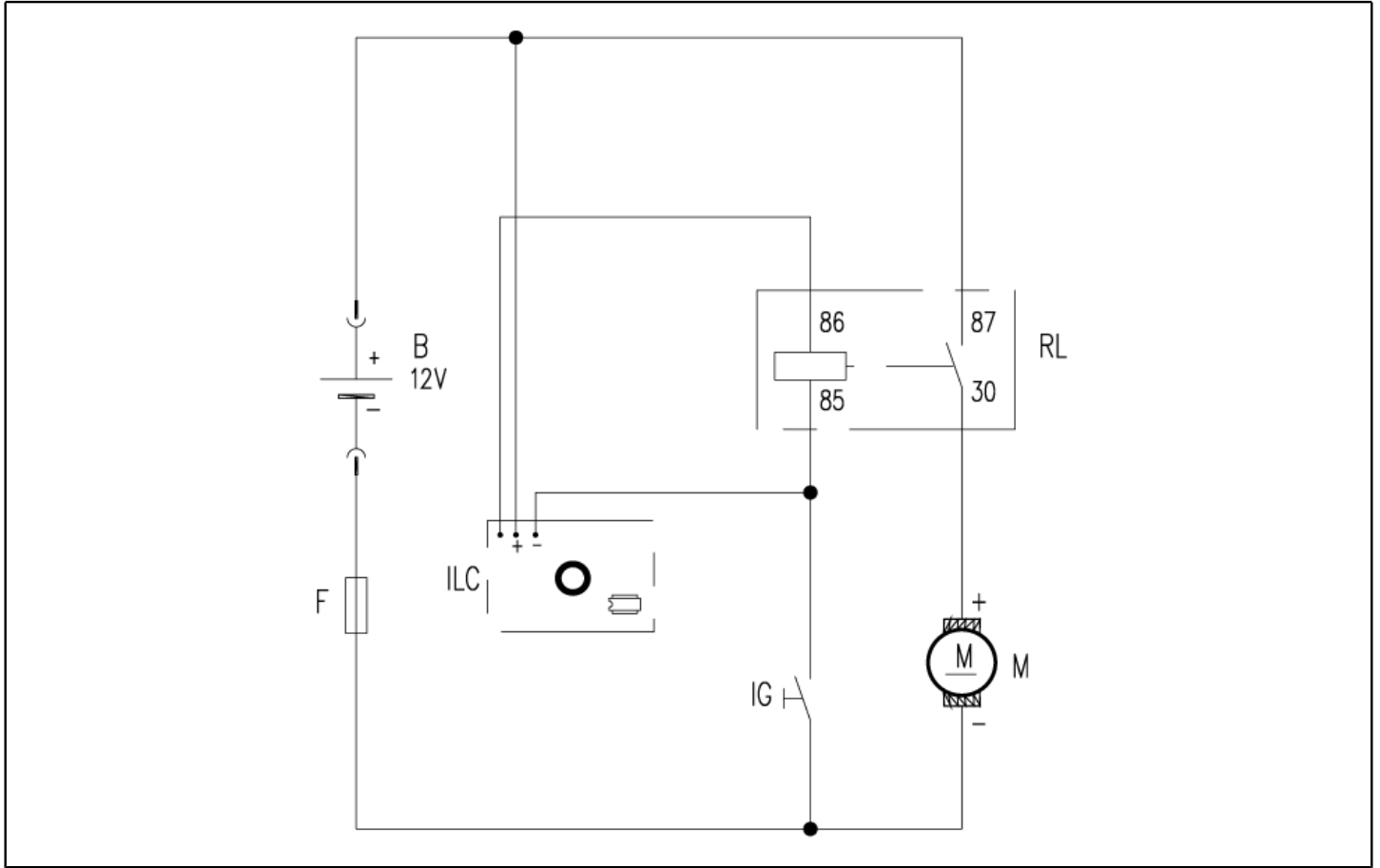
Ref. K	Part n.	Customer part n.	Description	Quantity	Validity		Price
					From	To	
0002	RCDS40158		HOSE FITTING D.15 P/GH. D. 9.5-15 OT.	1,00			--
0003	TBBP40067		L.P. HOSE SAE100 R6-1/2"	0,50			--
0004	RCDS40154		HOSE FITTING 3/8 M D. 9.5-15 OT.	1,00			--
0005	RCVR40121		CONNECTOR TEE 3/8 F/M/F A12	1,00			--
0006	VTVT40006		SCREW AF TCB-TC 5 X20 HILO INX	8,00			--
0007	MPVR40259		SUPPORT UPS RO FILT.	2,00			--
0008	VTVT00447	00000447	SCREW TE 8X25 UNI5739	4,00			--
0009	VTDD01692	00001692	NUT M 8 SERPRESS	4,00			--
0010	VTRS00512	00000512	WASHER D. 8 X24 ZC.	4,00			--
0011	MPVR40551		CONTAINER UPS RO +LB. HP.WRAP	1,00			--
0012	TBBP40067		L.P. HOSE SAE100 R6-1/2"	0,50			--
0013	VTDD40013		NUT G 1/2 OT.	1,00			--
0014	TBBP40066		L.P. HOSE SAE100 R6-3/8"	0,50			--
0015	RCVR40129		NIPPLE 1/2 - 3/8 CONICO D.15	2,00			--
0016	PPBP40003		PUMP 300LT/H S/BY-P OT PR 3AH	1,00			--
0017	RCVR40114		ELBOW 1/2" M/M A15	1,00			--
0018	GUGO28927	00028927	O-RING D. 9.13 X 2.62 NBR 70SH	1,00			--
0019	VTRS09813	00009813	WASHER D.25	2,00			--
0020	RTRT40002		WHEEL D.260 3.00-4 D.25 S.PI.NY	2,00			--
0021	MOMO40047		MOTOR 12V IP65 140W S1	1,00			--
0021	FGGT40010		JOINT GR.71	1,00			--
0021	PVVR40389		ADAPTER GR.71	1,00			--
0022	RCDS40158		HOSE FITTING D.15 P/GH. D. 9.5-15 OT.	1,00			--
0023	RCDS40159		HOSE FITTING D.15 P/GH. D. 7.5-12 OT.	1,00			--
0024	VTVT40052		SCREW TE-B 6.3X25 INOX-A2	2,00	01/08/2014		--
0024	VTVT13234	00013234	SCREW TCB-TC 3.5X19 NIK	2,00	14/05/2014		--
0025	RCDS40154		HOSE FITTING 3/8 M D. 9.5-15 OT.	1,00			--
0026	VTDD40013		NUT G 1/2 OT.	1,00			--
0027	VTDD40013		NUT G 1/2 OT.	1,00			--
0028	RCVR40114		ELBOW 1/2" M/M A15	1,00			--
0029	RCVR40117		ELBOW 1/2 M/F A5	1,00			--
0030	RCDS40153		HOSE FITTING 3/8 M D. 7.5-12 OT.	1,00			--
0031	RCDS01090	00001090	CAP 3/8X13 M WW90	1,00			--
0032	VVSC40012		VALVE UPS SAFETY	1,00			--
0033	RCVR40118		ELBOW 3/8 F/F/F A14	1,00			--
0034	VTDD40013		NUT G 1/2 OT.	1,00			--
0035	MPVR40260		CONTAINER UPS FILTER	2,00			--
0036	TBBP40066		L.P. HOSE SAE100 R6-3/8"	0,50			--
0037	RCDS40157		HOSE FITTING COUNT. D. 7.5-12 OT.	1,00			--
0038	MPVR40652		CONTAINER UPS DI-FILTER 2V.	1,00	01/09/2014		--
0039	MESB40005		REVOL.COUNTER GSD8	1,00			--
0040	RCVR40116		ELBOW 1/2" M/F A10	1,00			--
0041	RCVR40120		REDUCTION M/F 1/2"-1/4" A4	1,00			--
0042	VTDD40013		NUT G 1/2 OT.	1,00			--



Ref. K	Part n.	Customer part n.	Description	Quantity	Validity		Price
					From	To	
0043	MNMN40011		PRESSURE GAUGE 0-30MPa D.40 1/8	1,00			--
0044	FSVR11957	00011957	CLAMP D. 9.5-12 CLIC	2,00	01/08/2014		--
0045	RCGR40001		TAP A SF.G1/2"MF	1,00			--
0046	RCVR40122		CONNECTOR TEE 1/2 F/M/F A12	1,00			--
0047	RCDS40156		HOSE FITTING 1/2 M D. 7.5-12 OT.	1,00			--
0048	LAFN40611		FRAME HYDROCART UPS	1,00			--
0049	ABGO34061	00034061	VIBRATION DAMP. CL.25X17- 1M6X12 60SH NBR	2,00			--
0050	GUGO28927	00028927	O-RING D. 9.13 X 2.62 NBR 70SH	1,00			--
0051	RCDS40159		HOSE FITTING D.15 P/GH. D. 7.5-12 OT.	1,00			--
0051	RCDS40159		HOSE FITTING D.15 P/GH. D. 7.5-12 OT.	1,00			--
0052	RCVR29602	00029602	CONNECTOR D. 1/2"-5/8" PTC	1,00	01/08/2014		--
0053	RCDS40168		CONNECTOR M 3/4 NH - M 3/4 G	1,00			--
0054	VTRS13946	00013946	WASHER D. 8 X24 INX UNI 6593	4,00			--
0055	VTVT15907	00015907	SCREW TE 8X25 UNI5739 INX	4,00			--
0056	RCDS40080		NIPPLE 3/4NH - 1/2G OT.	1,00	29/05/2013		--
0057	RCVR40123		NIPPLE 1/2 - 1/2 CONICO A2	1,00			--
0058	VTRS13750	00013750	WASHER D. 5X14 INX	8,00			--
0059	GUGO19194	00019194	O-RING D. 11.11 X 1.78 NBR 70SH	1,00			--
0060	RCDS40153		HOSE FITTING 3/8 M D. 7.5-12 OT.	1,00			--
0061	RCDS40575	00040575	RING NUT G3/4 OT	1,00			--
0062	RCDS40170		NIPPLE M3/4 - M1/2 - F3/8	1,00			--
0063	RCVR40122		CONNECTOR TEE 1/2 F/M/F A12	1,00			--
0064	RCDS40162		VALVE SEAT UPS D.15-18.5 IX	1,00	12/06/2013		--
0065	LAFN40557		SPACER D. 6-10 L=10 UPS OT.	1,00	12/06/2013		--
0066	RCDS40160		VALVE BODY UPS G1/2 OT58	1,00	12/06/2013		--
0067	VTVT01168		GRUB SCREW M6X20	1,00	12/06/2013		--
0068	RCVR40115		ELBOW 3/8" M/M A15	1,00			--
0069	VVSF00671	0000671	VALVE 3/8	1,00			--
0070	RCDS40153		HOSE FITTING 3/8 M D. 7.5-12 OT.	1,00			--
0071	TBBP40066		L.P. HOSE SAE100 R6-3/8"	0,60			--
0072	VTDD15520	00015520	NUT M 6 A2 UNI 5588 INX	1,00	12/06/2013		--
0073	MLML40030		SPRING INOX X UPS	1,00	12/06/2013		--
0074	RCVR40119		REDUCTION M/F 3/4"-3/8" A4	1,00			--
0075	GUVR63570	00063570	ANTI-EXTR.RING D. 9 X12 X1.5 OR108	1,00	12/06/2013		--
0076	RCDS40161		SMALL PISTON V.UPS D. 9-12 IX	1,00	12/06/2013		--
0077	UGLN40033		NOZZLE M4 Fp 033 Inx	1,00			--
0078	RCDS40169		CONNECTOR M 3/4 NH - M 1/2 G	1,00			--
0079	RCVR40124		CONNECTOR TEE 1/2 F/F/M A13	1,00			--
0080	GUGO19194	00019194	O-RING D. 11.11 X 1.78 NBR 70SH	1,00			--
0081	TBBP40066		L.P. HOSE SAE100 R6-3/8"	0,42			--
0082	GUGO63403	00063403	O-RING D. 8.73 X 1.78 NBR 70SH	1,00	12/06/2013		--
0083	MPVR28995	00028995	GREY HUB CAP D. 110	2,00			--
0084	VTVT21988	00021988	SCREW TE 6X12 UNI8111 SW.FRM	1,00			--
0085	VTDD07887	0007887	NUT M 6 SERPRESS	4,00			--



Ref. K	Part n.	Customer part n.	Description	Quantity	Validity		Price
					From	To	
0086	GUGO01060	00001060	O-RING D. 9.92 X 2.62 NBR 70SH	1,00	12/06/2013		--
0087	RCVR29600	00029600	SOCKET PTC 3/4 F	1,00			--
0088	LAFN40612		PROTECTION BATTERIA x UPB	1,00			--
0088	LAFN40613		BRACKET OMEGA x UPB	1,00			--
0089	VTVT01532	00001532	SCREW TE 6X25 UNI5739	4,00			--
0090	VTRS04026	00004026	WASHER D. 6X18X2.38	8,00			--
0150	TBBP40072		L.P. HOSE L=890 3/8M 1/2Fsp	1,00			--
0151	TBBP40078		L.P. HOSE L=500 3/8M 1/2F	1,00			--
0152	TBBP40073		L.P. HOSE 3/8 L=600 3/8M 1/2F	1,00			--
0153	TBBP40070		L.P. HOSE L=500 3/8M 1/2F	1,00			--
0154	TBBP40069		L.P. HOSE L=320 3/8M 1/2F	1,00			--
0155	PMBL40090		CARRYNG BAG	1,00			--
0156	PMQE20424			1,00			--
0157	TBBP40074		L.P. HOSE 3/8 L=420 1/2M 1/2F	1,00			--



Ref. K	Part n.	Customer part n.	Description	Quantity	Validity		Price
					From	To	
F	MEVR31122	00031122	FUSE 30 A GREEN	1,00			--
IG	MECI93807		SWITCH 0/1 EVE SXA4528111221000	1,00	21/02/2014		--
RL	MERL40006		SWITCH RELAY ITAL.520 40A 12VAC	1,00	01/01/2015		--
ILC	MECE40023		PCB HPB 12V	1,00			--